



## LONDON – THE O2

InterContinental Meetings are designed to capture a genuine sense of place that will inspire delegates. Our experienced team understands the demands of a busy event planner and ensure that the process runs seamlessly at every stage. Whatever the event, the InterContinental Meetings team is here to make life easier for you and to create a rewarding occasion for those attending.

# I INTERCONTINENTAL MEETINGS.



## WELCOME TO THE O2

Located on London's vibrant Greenwich Peninsula, the new InterContinental London – The O2 hotel, uniquely positioned on the River Thames, presents luxury inspired by its location. In the heart of the Royal Borough of Greenwich, birthplace of Henry VIII and Greenwich Mean Time, the hotel is surrounded by historic naval and maritime landmarks.

The hotel delivers opulent interiors throughout the 5 restaurants and bars, including the fine dining Peninsula Restaurant and Eighteen Sky Bar, whilst boasting unrivalled views of the river and city, showcasing London through a fresh perspective, from the outside in.

## HOTEL FACILITIES

The brand new luxury hotel and purpose built conference centre features the UK's largest pillar-free ballroom which accommodates up to 3,000 guests for bespoke events and exclusive hire.

The hotel offers 19 additional meeting spaces with natural daylight, 453 spacious bedrooms & suites, a state-of-the-art Spa with 8 treatment rooms, fully equipped gym and a 17 metre indoor pool.

An exciting line up of 5 destination inspired bars & restaurants with outstanding views of the river and Canary Wharf include a sophisticated 18th floor sky bar and an elegant fine dining restaurant.

The Club InterContinental executive lounge offers a tranquil getaway from the hustle and bustle of the hotel and allows our members to enjoy all day beverages and dining.

The hotel has its own car park with 250 spaces, including disabled spaces and points to charge electric vehicles.

Hotel guests can benefit from 24 hour access to the business centre and concierge services.

Unique transportation via Thames Clipper river bus service, Thames RIB Experience speed boats, the Emirates Air Line cable car and underground links the hotel to London's West End, Canary Wharf and London City Airport.

## SERVICE PROMISE

Our success is founded on delivering a seamless service in environments that inspire delegates to connect with their surroundings and each other. Whatever the event, our team understands what it takes to make life easier for the planner and can create an efficient, memorable and highly-rewarding occasion.



It's not just what we deliver that distinguishes us, but how we deliver it. From initial contact, our highly-trained team provides a responsive and personalised service, which ensures seamless communication from beginning to end. Busy event organisers are able to benefit from fast availability checks, transparent pricing and the latest technology tools, such as virtual tours and fully interactive floor plans that can be customised to each event.

## INSIDER COLLECTION

As part of its meetings and events offering, InterContinental London –The O2 also features The Insider Collection. Drawing on the hotel's local knowledge The Insider Collection offers delegates the opportunity to book tailored meeting experiences such as team building activities and off-site meeting venues. Some of the Insider Collection features include:

### INSIDER BREAKS

Insider breaks are brief enlightening intermissions, which give attendees a taste of the local area such as afternoon tea in the Meridian Lounge, gin cocktails at the Clipper Bar, Emirates Aviation flight simulator experience, a Chi Ball session overlooking the Thames River or even a session at the golf driving range NI Golf.

## INSIDER LOCATIONS

The team can organise meetings located offsite at local cultural landmarks and heritage locations, such as the Planetarium at the Royal Observatory, the Painted Hall or the Queen's House allowing delegates to experience a side of London that they would rarely see.

## INSIDER INTERACTIONS

With London as our inspiration, we can create a team-building experience that will help connect your delegates. From a mixology session at Eighteen Sky Bar to a James Bond experience with Thames RIB Experience, and Up at the O2, discover an original way to engage delegates and motivate them to build effective working relationships.

## INSIDER SPEAKERS

InterContinental London – The O2 offers access to well-known local speakers. From a private Sommelier Session to Craft of beer making at Meantime Brewery, our network of inspirational presenters enrich the overall meeting experience whilst bringing a sense of place.

## INSIDER COMMUNITY

InterContinental London – The O2 gives delegates the opportunity to support the local community by volunteering with our partners.

## SERVED IN VIEW OF THE DRAMATIC LONDON SKYLINE



### BARS

#### CLIPPER BAR

The Clipper Bar is an architectural work of art with unrivalled floor to ceiling windows overlooking Canary Wharf and the River Thames with a capacity of 120.

Within the heart of this space is an impressive Clipper shaped marble bar, offering a full range of wines, draught beers, signature spirits and cocktails created by world-class mixologists.

The beverages are sourced locally through small, hand selected producers and home-grown crops implementing traditional methods.

#### EIGHTEEN SKY BAR

On the hotel's 18<sup>th</sup> floor is Eighteen Sky Bar; a stylish and sophisticated rooftop space exposing far reaching views of the London skyline and offering a cocktail menu inspired by spice, herbs and botanics. A full range of local and international craft beers, specialist wines, spirits and Champagnes are served against the glittering backdrop of Canary Wharf, the City of London and The O2.

Situated just a few steps from the hotel's penthouse and with an in-built dance floor; Eighteen Sky Bar can be hired exclusively for private parties and special events for up to 110.

### RESTAURANTS

#### THE PENINSULA RESTAURANT

The elegant Peninsula Restaurant offers an understated yet premium dining experience for 80 guests. Modern European cuisines deftly infused with exotic flavours are reflective of the active spice trade that passed through East London's docks.

The restaurant offers a la carte, 3 course menu and 5 and 7 course tasting menus. A carefully selected wine list and dramatic views of Canary Wharf and the River Thames brilliantly complement the overall dining experience. Furthermore, a private dining suite seating 24 guests is available for special and intimate occasions.

#### MERIDIAN LOUNGE

The Meridian Lounge is a meeting hub on the ground floor, aptly named to reflect the hotel's location within Greenwich, a destination marking the starting point of every time zone in the world. The Meridian Lounge provides guests with a relaxed environment in which to work or entertain, with over 32 teas on offer from The East India Company, aromatic coffees, hot chocolate, freshly baked pastries, salads, gourmet sandwiches and an extensive afternoon tea menu served either inside or relaxing on the 45-seat outdoor terrace with views of the River Thames.

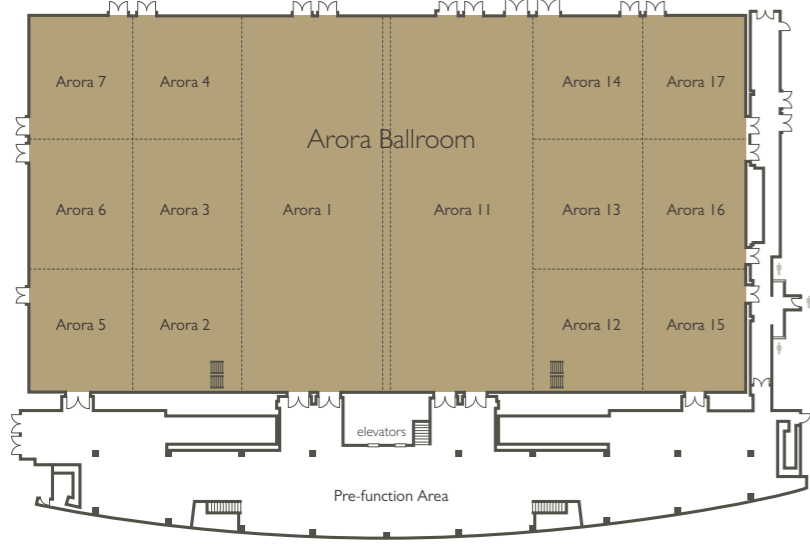
#### MARKET BRASSERIE

The Market Brasserie offers an interactive dining experience inspired by the original Greenwich trading markets and new experiences from London's bustling Billingsgate, Spitalfields and Covent Garden markets for up to 220 guests. The lively brasserie boasts floor-to-ceiling windows and an open plan kitchen, with fresh breads and pastries made daily, impressive displays of British cured meats and sides of smoked salmon. During dinner, guests can choose from a selection of regionally sourced meat and fish from the British Isles at their table and have their choice cut of meat or fillet of fish cooked to their liking in front of them in the theatre kitchen.

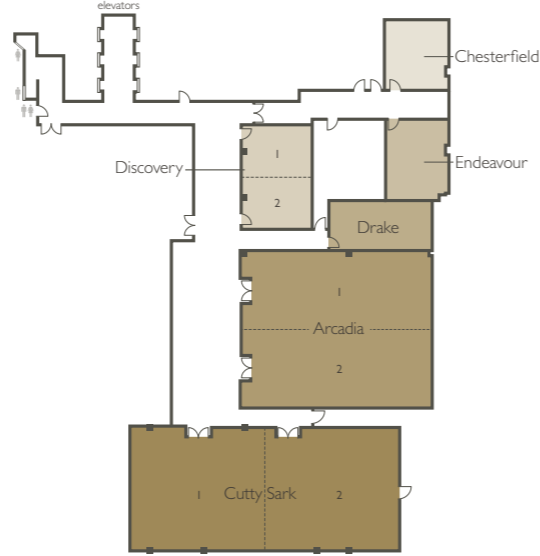


# MEETINGS & EVENTS SPACE

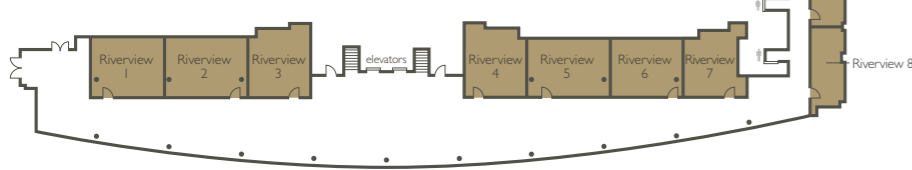
## 1ST FLOOR: ARORA BALLROOM



## 2ND FLOOR: MEETING ROOMS



## 2ND FLOOR: RIVERVIEW LEVEL



InterContinental London – The O2 operates the UK's largest pillar free ballroom and dedicated conference and events centre. The Arora Ballroom boasts a 3,013 sqm pillar free event space with 7.2m ceiling height that accommodates up to 3,000 for a conference theatre style or 2,400 for a gala dinner.

The large pre-function area and the mezzanine floor both feature double height floor-to-ceiling windows with spectacular views of the River Thames and Canary Wharf.

The brand new hotel has been designed to deliver the optimum meeting environment and combines state-of-the-art facilities,

making the hotel one of the most sought-after locations for meetings, conferences, awards ceremonies and weddings.

The hotel offers an additional 19 meetings rooms ideal for smaller meetings, all with stunning views over Canary Wharf, the River Thames or The O2.

The hotel has 240 car parking spaces for guests, with additional parking close to The O2; and is easily accessible from London's West End, Canary Wharf, Excel exhibition centre, and London City Airport.

Name of Room	Area (sqm)	Length x Width (m)	Height	Theatre	Classroom	Boardroom	Ushape	Banquet	Cabaret
--------------	------------	--------------------	--------	---------	-----------	-----------	--------	---------	---------

## GROUND FLOOR Foyer Area: 700 sq. m.

Docklands	57	7.5 x 7.6	4m	55	25	20	15	30	18
-----------	----	-----------	----	----	----	----	----	----	----

## FIRST FLOOR Pre Function Space: 847 sq. m.

Arora Ballroom	3013	75.7 x 39.8	7m	3,000	1800	-	-	2,400	1680
Arora 1-7 (East London)	1504	39.8 x 37.8	7m	1,500	900	-	-	1,200	720
Arora 1	613	39.8 x 15.4	7m	600	350	-	-	518	310
Arora 2	149.3	13.1 x 11.4	7m	120	60	36	40	108	80
Arora 3	153.9	13.5 x 11.4	7m	120	60	36	40	108	80
Arora 4	149.3	13.1 x 11.4	7m	120	60	36	40	108	80
Arora 2,3,4	452.5	39.7 x 11.4	7m	420	240	-	-	335	200
Arora 7	144.1	13.1 x 11	7m	120	60	36	40	108	80
Arora 6	148.5	13.5 x 11	7m	120	60	36	40	108	80
Arora 5	144.1	13.1 x 11	7m	120	60	36	40	108	80
Arora 5,6,7	436.7	39.7 x 11	7m	425	210	-	-	335	200
Arora 11-17 (West London)	1504	39.8 x 37.8	7m	1,500	900	-	-	1,200	720
Arora 11	613	39.8 x 15.4	7m	600	350	-	-	518	310
Arora 12	149.3	13.1 x 11.4	7m	120	60	36	40	108	80
Arora 13	153.9	13.5 x 11.4	7m	120	60	36	40	108	80
Arora 14	149.3	13.1 x 11.4	7m	120	60	36	40	108	80
Arora 12,13,14	452.5	39.7 x 11.4	7m	420	240	-	-	335	200
Arora 15	144.1	13.1 x 11	7m	120	60	36	40	108	80
Arora 16	148.5	13.5 x 11	7m	120	60	36	40	108	80
Arora 17	144.1	13.1 x 11	7m	120	60	36	40	108	80
Arora 15,16,17	436.7	39.7 x 11	7m	420	210	-	-	335	200

## SECOND FLOOR Mezzanine Floor: 973 sqm

Riverview Suite 1	49.4	7.75 x 6.38	2.7m	40	30	14	16	20	3 tables
Riverview Suite 2	53.3	8.35 x 6.38	2.7m	40	30	14	16	20	3 tables
Riverview Suite 3	49.4	7.75 x 6.38	2.7m	40	30	14	16	20	3 tables
Riverview Suite 4	58.5	7.75 x 7.75	2.7m	40	30	14	18	30	3 tables
Riverview Suite 5	57.1	8.95 x 6.38	2.7m	40	30	14	18	30	3 tables
Riverview Suite 6	43.4	6.8 x 6.38	2.7m	25	15	14	16	20	3 tables
Riverview Suite 7	48.2	7.55 x 6.38	2.7m	50	30	14	16	20	3 tables
Riverview Suite 8	29.4	8.4 x 3.5	2.7m	20	-	12	8	-	-
Riverview Suite 9	29.8	8.5 x 3.5	2.7m	20	-	12	8	-	-
Chesterfield	32.5	6.27 x 5.18	2.8m	-	-	14	-	-	-
Endeavour	37.7	7 x 5.38	2.8m	-	-	16	-	-	-
Drake	39.7	9.17 x 4.33	2.8m	20	10	10	-	-	-
Arcadia 1	120	16.9 x 7.1	2.8m	90	60	28	28	72	64
Arcadia 2	120	16.9 x 7.1	2.8m	90	60	28	28	72	64
Arcadia	240	33.8 x 7.1	2.8m	185	120	56	56	156	128
Cutty Sark 1	132	12 x 11	2.8m	110	60	40	30	84	72
Cutty Sark 2	132	12 x 11	2.8m	110	60	40	30	84	72
Cutty Sark	264	24 x 11	2.8m	240	120	80	60	192	144
Discovery 1	29	6.3 x 4.6	2.8m	20	14	10	10	-	-
Discovery 2	27.1	6.3 x 4.3	2.8m	20	14	10	10	-	-
Discovery	56.1	6.3 x 8.9	2.8m	40	28	20	20	24	-

## RESTAURANTS

Market Brasserie Restaurant				-	-	-	-	220	-
Peninsula Restaurant				-	-	-	-	80	-
Peninsula Restaurant – Private Dining Room				-	-	-	-	24	-
Eighteen Sky Bar				110	-	-	-	-	-

Capacities vary subject to client's usage of the room





InterContinental London – The O2  
 | Waterview Drive, Greenwich Peninsula, SE10 0TW  
 Tel: +44 (0)20 8463 6868  
 info@iclondon-theo2.com  
 iclondon-theo2.com

f InterContinentalLondonTheO2  
 @InterConTheO2  
 @InterConTheO2